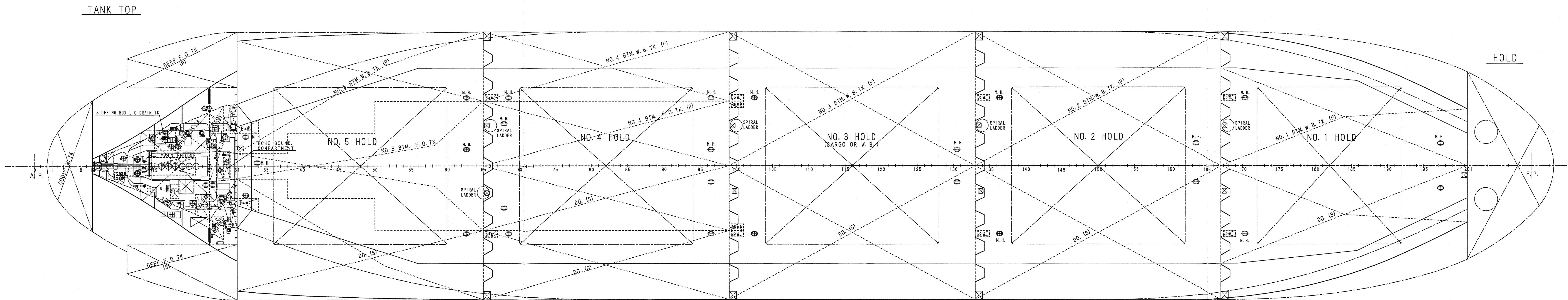
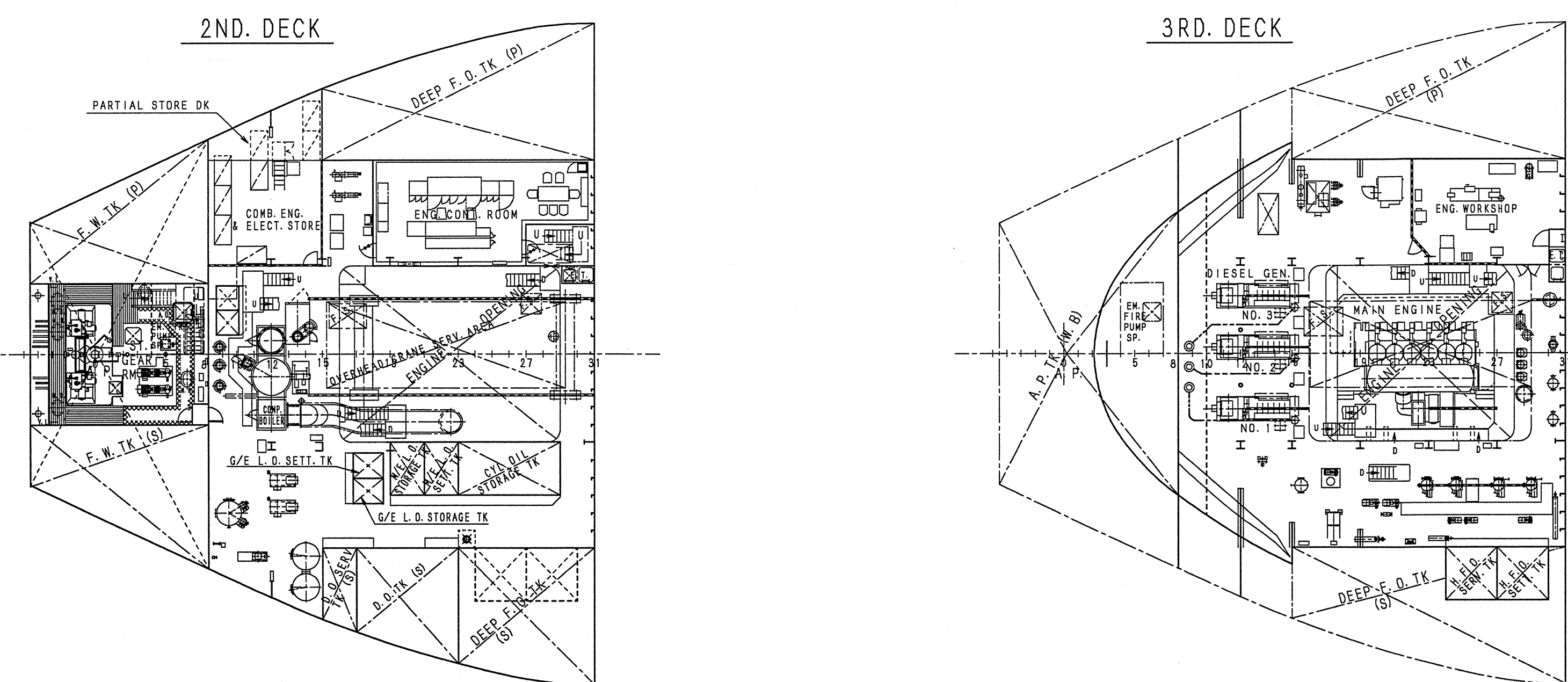
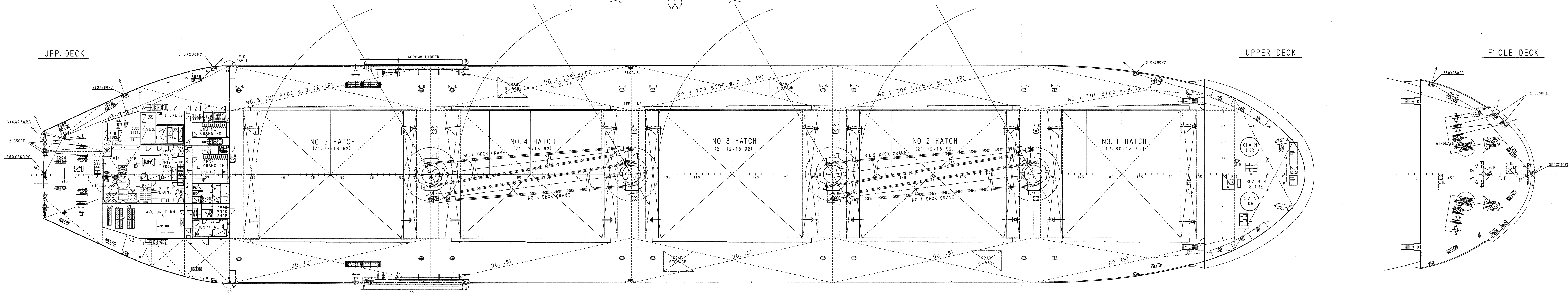
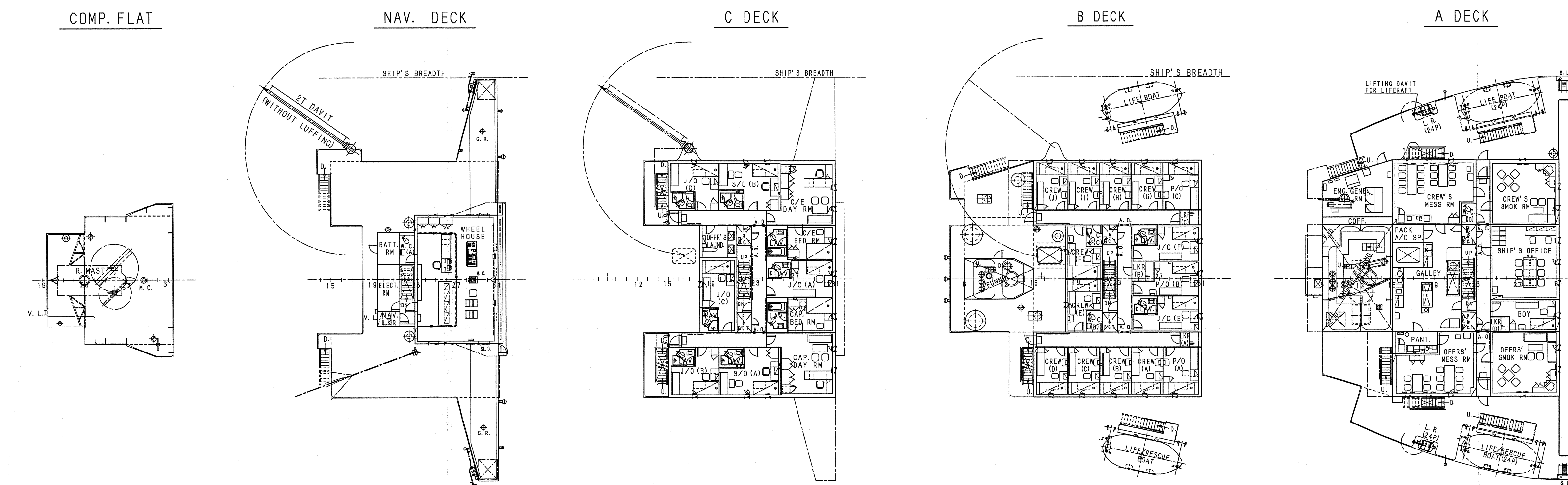
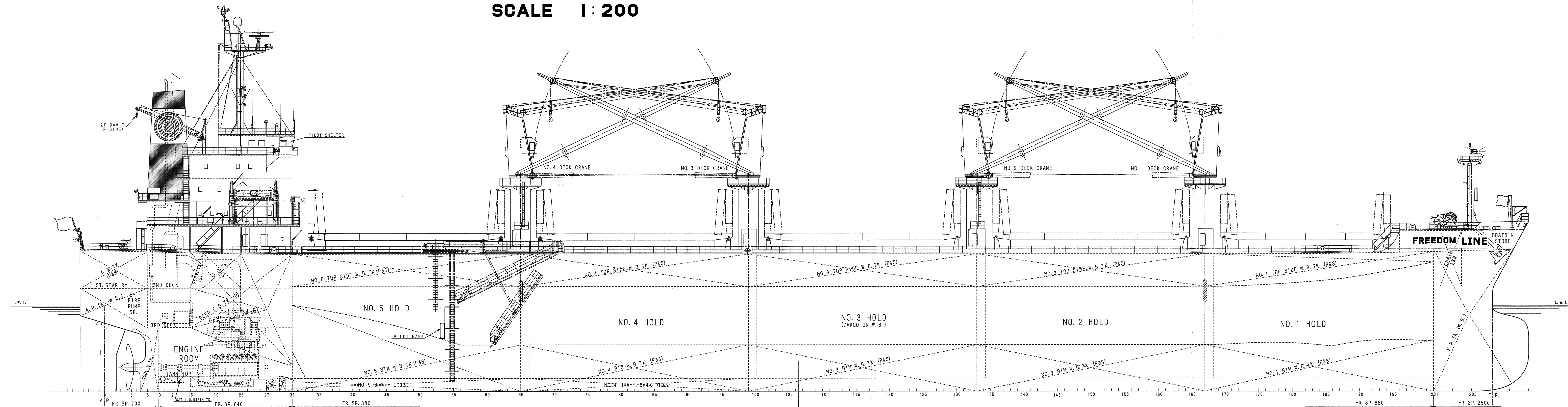
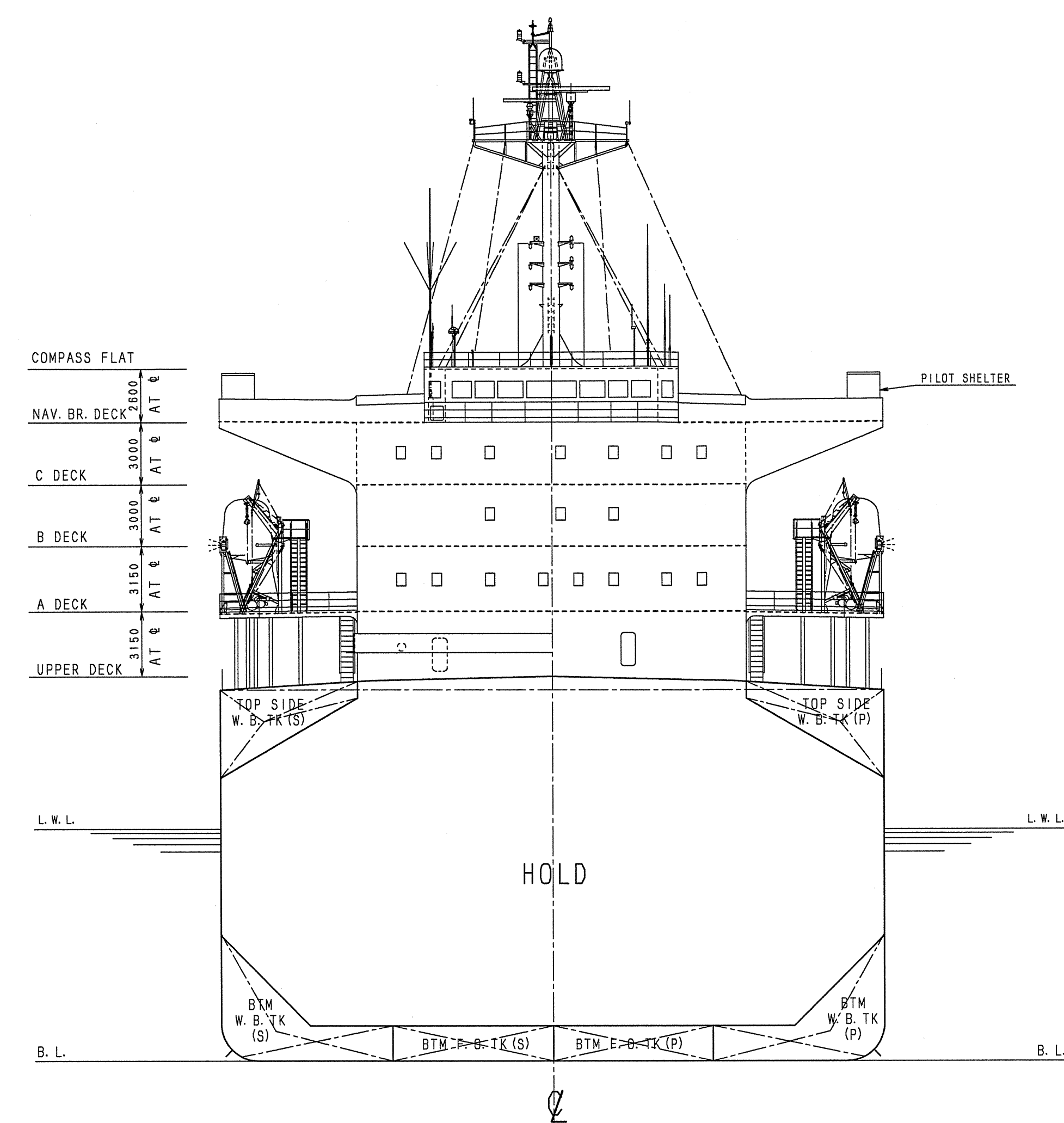


FREEDOM LINE GENERAL ARRANGEMENT

SCALE 1:200



PLAN HISTORY	
15TH JULY, 2002	PREPARED FOR S. Nos. 1581/2
30TH JAN., 2003	PREPARED FOR S. Nos. 1581/24
10TH SEP., 2004	PREPARED FOR APPROVAL
28TH FEB., 2005	PREPARED FOR FINISHED PLAN

PRINCIPAL PARTICULARS	
1. PRINCIPAL DIMENSIONS	
LENGTH (O.A.)	188.88 M
LENGTH (P.P.)	182.00 M
BREADTH (M.L.D.)	32.26 M
DEPTH (M.L.D.)	17.90 M
DRAFT (M.L.D.) DESIGN	11.20 M
DRAFT (M.L.D.) SCANTLING	12.55 M
2. TONNAGE	
GROSS (INTERNATIONAL)	31,227 M.T.
NET (INTERNATIONAL)	18,504 M.T.
3. DEADWEIGHT (DESIGN/SCANTLING)	48,548/56,056 M.T.
4. MAIN ENGINE	
TYPE & NO.	1 SET
MITSUBISHI MAN B&W B50MC	
M.C.R.	9,480 kW X 127 RPM
N.S.R.	7,080 kW X 115.2 RPM
5. SERVICE SPEED	ADT. 14.5 KTS.
(ON DESIGN DRAFT AT NSR WITH 15% SEA MARGIN)	
6. COMPLEMENT	TOTAL 24 P.
7. CLASS	NK, NSR, BULK CARRIER, STRENGTHENED FOR HEAVY CARGOES, HOLD NOS. 2 AND 4 MAY BE EMPTY, ESP. MNSR(MG)
8. PORT OF REGISTRY	HONG KONG
9. OFFICIAL NUMBER	HK-1454
10. CALL SIGN	VKRW2
11. OWNER	FOUR LAND (PANAMA) S.A.
12. BUILDER	MITSUBI ENGINEERING & SHIPBUILDING CO., LTD., TAMANO WORKS
13. KEEL LAID	27TH OCT., 2004
14. LAUNCHED	17TH JAN., 2005
15. DELIVERED	22ND MAR., 2005

THE INFORMATION SHOWN ON THIS DRAWING OR DOCUMENT IS THE EXCLUSIVE PROPERTY OF M&E. YOU ARE REQUESTED TO HANDLE IT IN STRICT CONFIDENCE. IT MUST NOT BE USED COPIED OR REPRODUCED WITHOUT THE EXPRESS PERMISSION OF M&E.

FINISHED PLAN

MITSUBI ENGINEERING & SHIPBUILDING CO., LTD.	
TAMANO WORKS	
DESIGN: YOSHIOKI DEPARTMENT	SHIP'S NAME
GENERAL MANAGER	SHIP'S NO.
DESIGNER	S. No. 1581
MANAGER	FREEDOM LINE
ASSIST. MANAGER	D.W. 56,000 M.T. TYPE BULK CARRIER
CHARGE ENGINEER	一般配置図
DATE: 28TH FEB., 2005	GENERAL ARRANGEMENT
JOB NO. TS1581	FOR CLASSIFY. NO. SCALE 1/200
DRAWING NO. 1KDGG01	LIST NO. HA-02