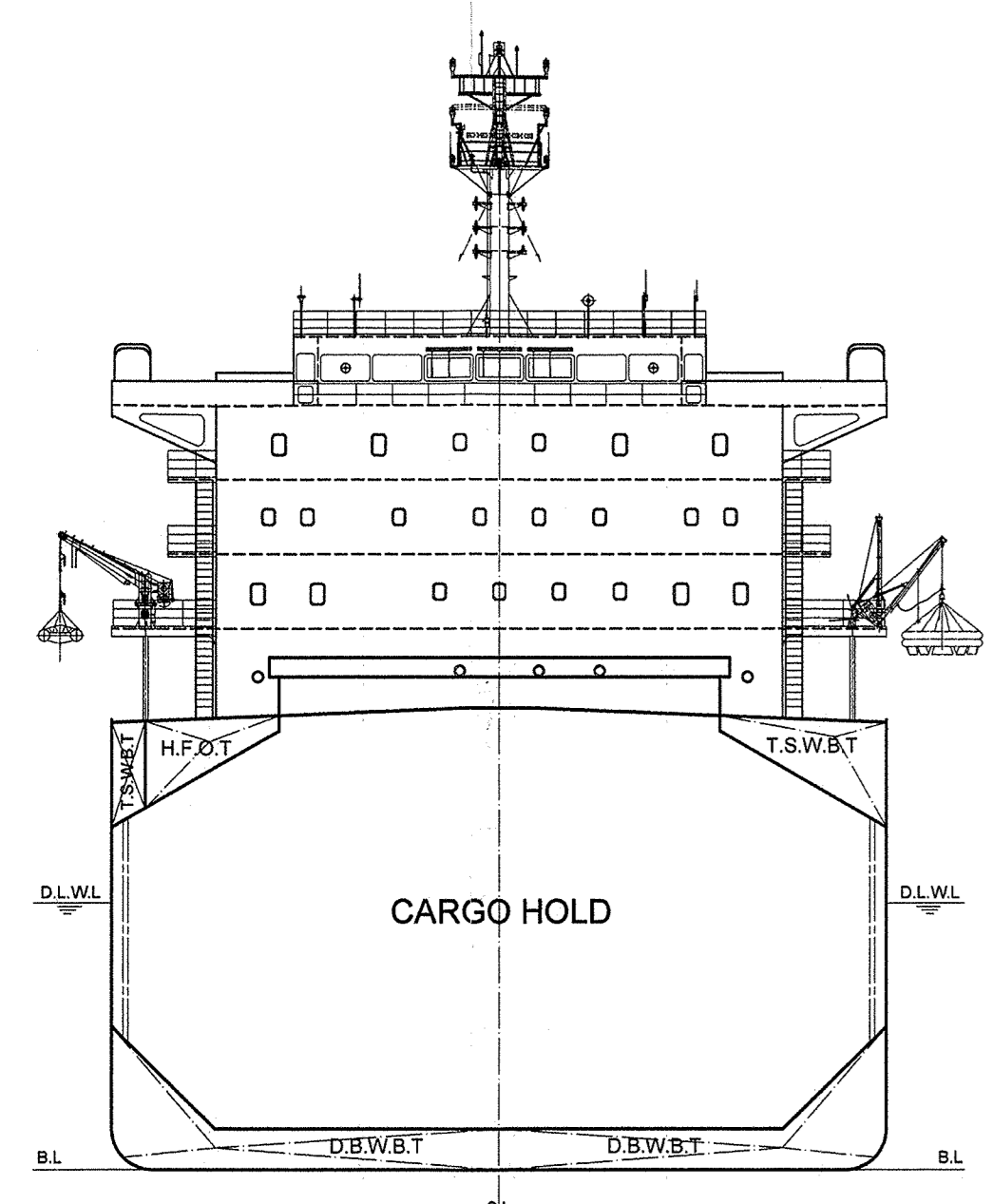
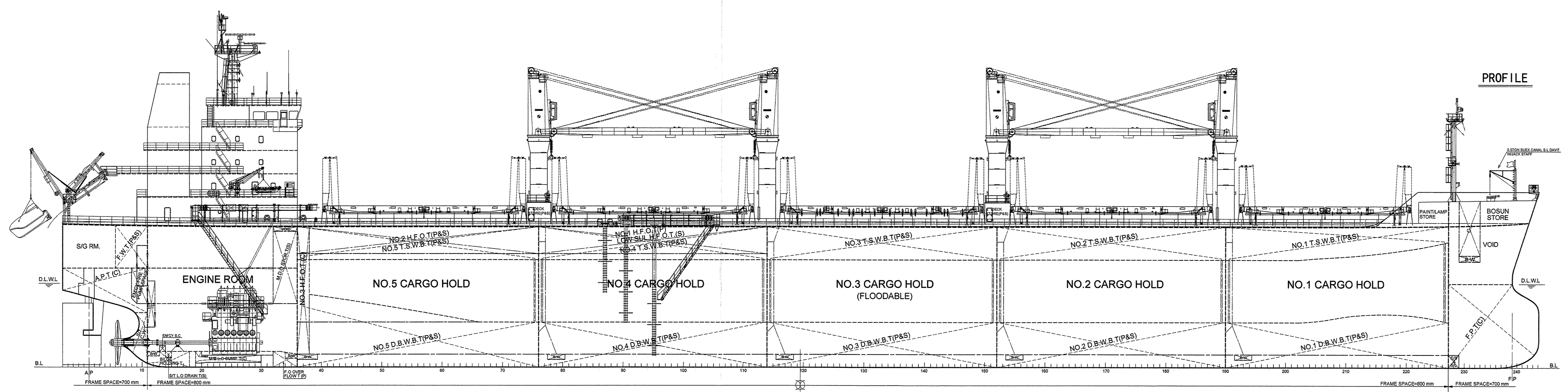


# PLAN HISTORY

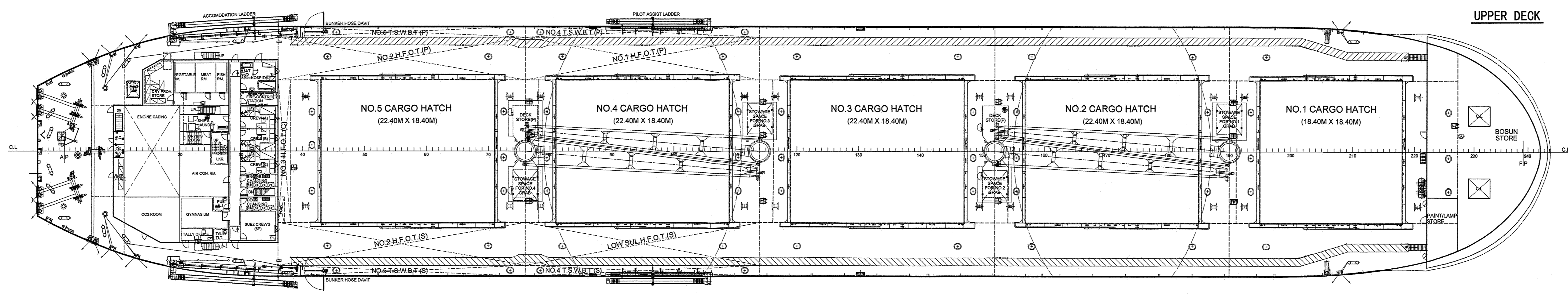
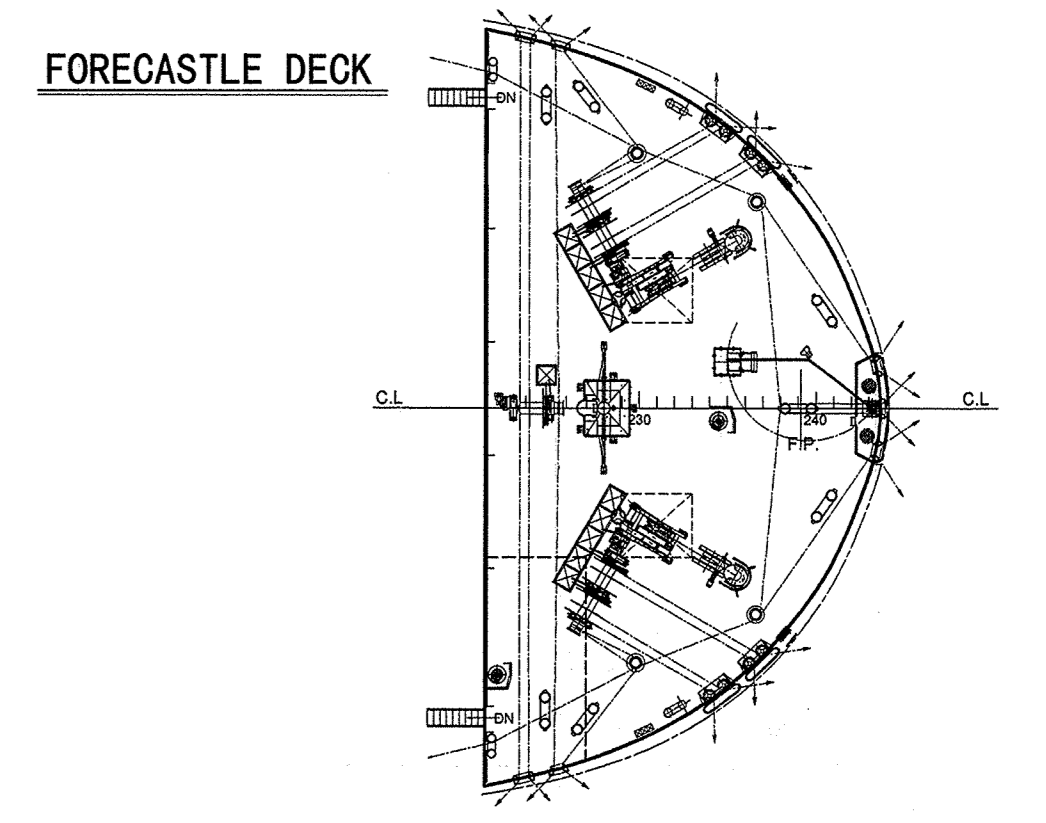
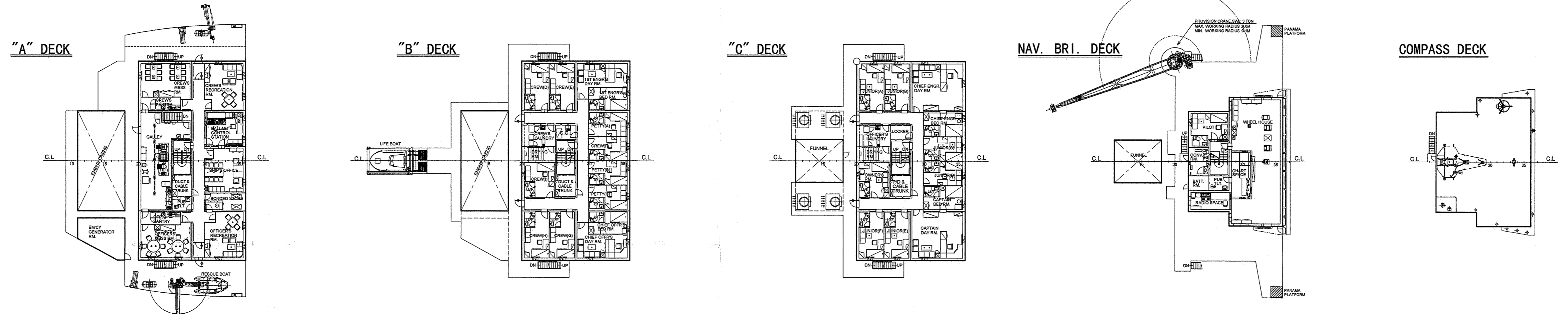
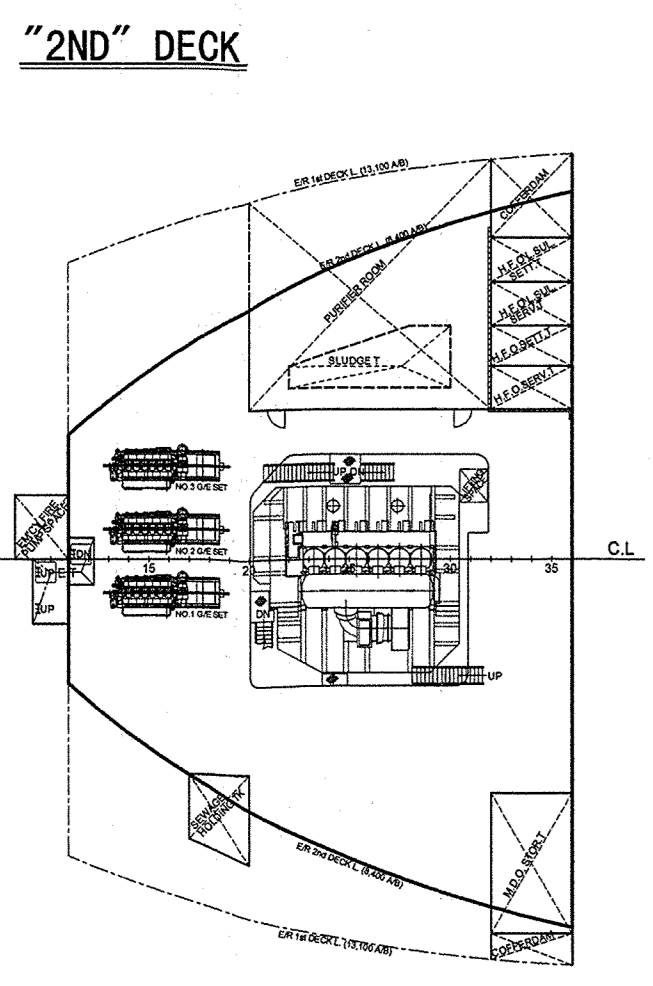
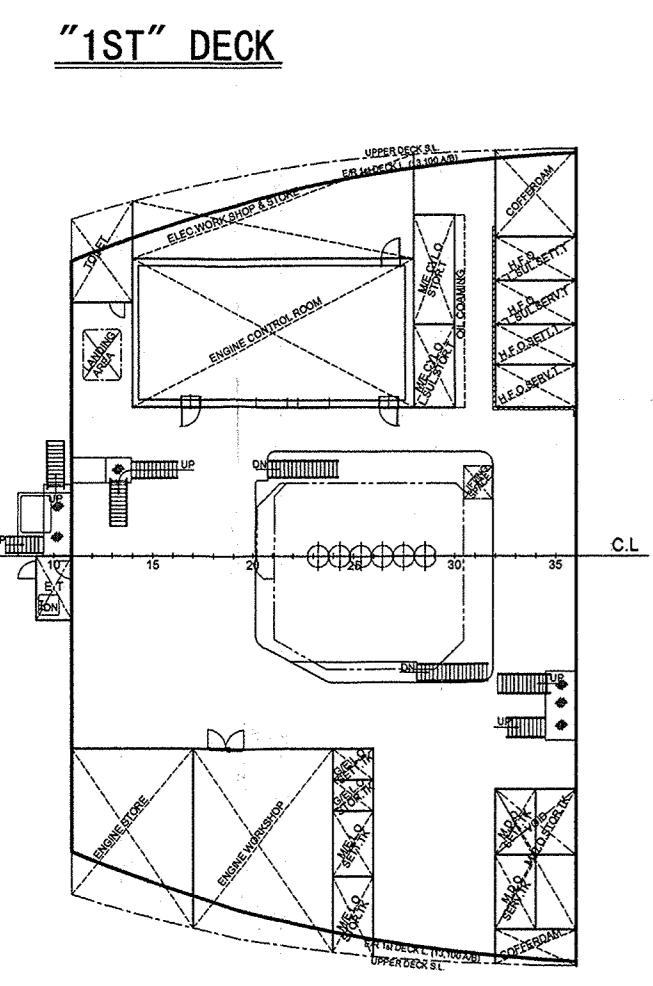
DATE	REV.	DESCRIPTION	REMARK
2010.06.03	A	1. FINAL DRAWING For Hull No. H-1032	



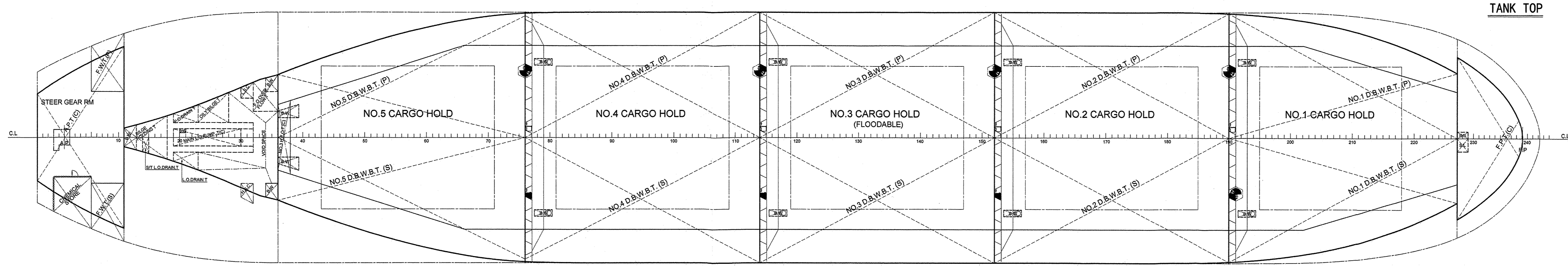
TYPICAL SECTION



PROFILE



UPPER DECK



TANK TOP

## PRINCIPAL PARTICULARS

LENGTH (O.A.)	195.00 M
LENGTH (B.P.)	189.00 M
BREADTH (M.L.D.)	32.26 M
DEPTH (M.L.D.) UPPER DECK	18.60 M
DRAFT (D.L.W.L.)	11.10 M
DRAFT (SCANTLING)	13.00 M
DEAD WEIGHT (at D.L.W.L.)	47,494.7 MT
DEAD WEIGHT (at SCANTLING)	59,609.2 MT
MAIN ENGINE (at MCR)	B&W 6S50MC-C (MCR)
MAIN ENGINE (at NCR)	13,560 BHP x 127.0 RPM
SERVICE SPEED (on DESIGN DRAFT)	12,204 BHP x 122.6 RPM
SERVICE SPEED (NCR with 15% S.M.)	14.84 KTS
COMPLEMENT	24P+6

CLASSIFICATION  
 ABS: \*A1, Bulk Carrier, BC-A [holds 2 and 4 may be empty], \*AMS, ACCU, CSR  
 AB-CM, ESP, GRAB(20), TCM, UWILD, POT, CRC, CPS

FOR FINAL

SEAGULL		BB - 02
HULL NO.	H-1032	IMO 9452517
SHIP TYPE	59,000 DWT CLASS BULK CARRIER	
APPROVED :	C.H. SONG	
APPROVED :		
CHECKED :	H.C. CHA	
DRAWN :	Y.W.KIM	
DATE	2010.06.03	SCALE 1/300
DESIGNER	BASIC DESIGN TEAM	
BUILDER	SPP PLANT & SHIPBUILDING CO.,LTD.	