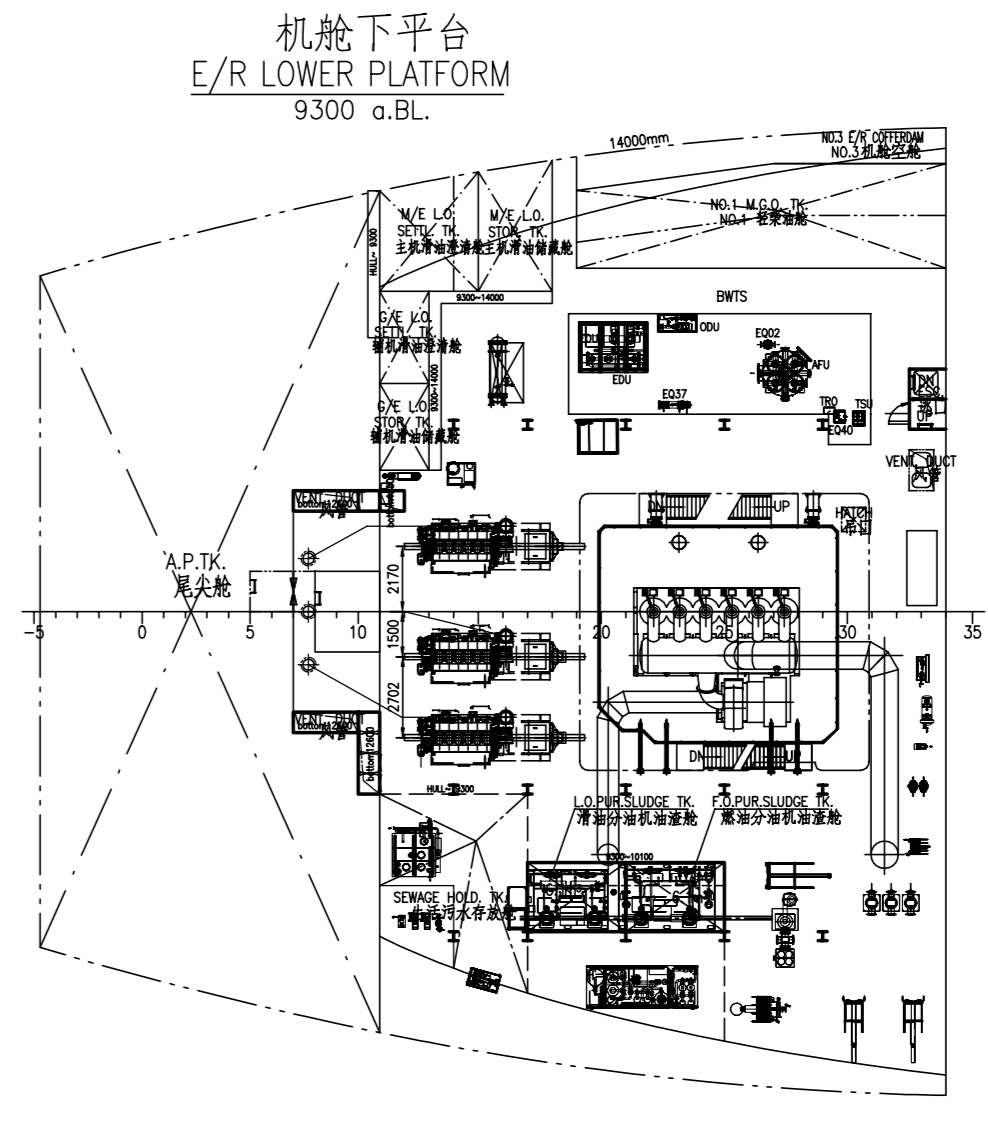
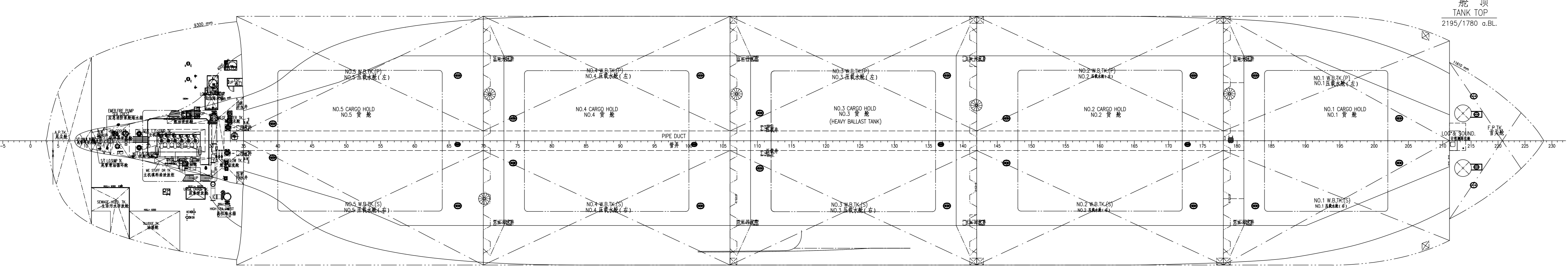


主要尺度及数据  
PRINCIPAL DIMENSIONS

总长 LENGTH O.A.	199.90 m
垂线间长 LENGTH B.P.	196.50 m
干舷类型 FREEBOARD TYPE	B-60
型宽 BREADTH MLD.	32.26 m
型深 DEPTH MLD.	18.90 m
结构吃水 SCANTLING DRAFT	13.50 m
载重量 DEADWEIGHT at SCANTLING DRAFT	abt. 63500 t
船级社 EQUIPMENT NUMBER	3318.68
总吨 GROSS TONNAGE	SEE CLASS'S APPROVAL
净吨 NET TONNAGE	SEE CLASS'S APPROVAL
主机 MAIN ENGINE	MAN 6550ME-C9.6 (Tier III HP SCR & EGR) 1 set
C.M.C.R.	7000kW x 86.8r/min
C.S.R. (78% C.M.C.R.)	5460kW x 79.9r/min
服务航速 SERVICE SPEED (at SCANTLING DRAFT, CSR, 15RS, MATHW ESD)	abt. 13.50 kn
续航力 ENDURANCE	abt. 20,000 n.mile
船员定额 CREW COMPLIMENT	24 Persons
救生艇定员 LIFE BOAT CAPACITY	25 Persons
船级 CLASSIFICATION	LR + 100A1, Bulk Carrier, CSR, BC-A, hold nos. 2, 4 may be empty.
标志 MARKING	GRAB [20], ESP, Shipright (ACSIS), CM, LL, *MS, ECO (EED-3), EGOV(SCR)
	+ LMC, LMS, BWTS with the descriptive notes:
	"Shipright (BWP, S+7, U), SCM, HM-EU, SERPS"
IMO号 IMO NUMBER	1029479
挂旗 FLAG	Marshall



OUT.	-	PFL	-	THEOLOGOS S	FINAL DESIGN
HULL NO.	-	ELEC	-	IMO: 1029479	JL28230419
GEN.	-	MACH	-		DWG NO. JL415(3)-100-04
DATE	SIG.	DATE	SIG.	REV.	WEIGHT
DESIGNED	徐国祥	DATE	2024-11-12	0	SCALE
CHECKED	徐国祥	DATE	2024-11-12	1	1:250
VERIFIED	于永权	DATE	2024-11-12		
APPROVED	卢永勇	DATE	2024-11-12		